

Allobone®

Allografts Allografts-Specialities

Allobone® Spongiosa Bloc

AB200-90006	Spongiosa Bloc	5 x 5 x 10 mm	1 pc
AB119-90010	Spongiosa Bloc	5 x 10 x 20 mm	1 pc
AB201-90007	Spongiosa Bloc	15 x 15 x 30 mm	1 pc
AB120-90012	Spongiosa Bloc	10 x 10 x 20 mm	1 pc
AB121-90011	Spongiosa Bloc	10 x 20 x 30 mm	1 pc
AB127-00400	Spongiosa Bloc	10 x 10 x 30 mm	1 pc
AB202-90008	Spongiosa Bloc	15 x 30 x 30 mm	1 pc
AB160-90015	Keil/Wedge	30 x 30 x 8 mm	1 pc



Allobone® Spongiosa Granulate/Chips

AB128-90022	Spongiosa Granulate/Chips	4 – 8 mm	10 cc
AB134-01500	Spongiosa Granulate/Chips	4 – 8 mm	15 cc
AB123-90023	Spongiosa Granulate/Chips	4 – 8 mm	25 cc
AB141-00100	Spongiosa Granulate/Chips	2 – 5 mm	1 cc
AB067-00300	Spongiosa Granulate/Chips	2 – 5 mm	3 cc
AB143-90071	Spongiosa Granulate/Chips	2 – 5 mm	5 cc
AB145-90073	Spongiosa Granulate/Chips	2 – 5 mm	10 cc
AB146-90074	Spongiosa Granulate/Chips	2 – 5 mm	15 cc
AB147-90075	Spongiosa Granulate/Chips	2 – 5 mm	25 cc

Allobone® Spongiosa Powder

AB196-90032	Spongiosa Powder	< 2 mm	1 cc
AB158-90033	Spongiosa Powder	< 2 mm	2 cc

Allobone® Femoral Heads

AB002-90009	1/4 Femoral Head	1 pc
AB003-90003	1/2 Femoral Head	1 pc
AB001-90001	1/1 Femoral Head	1 pc

Produkteinformation

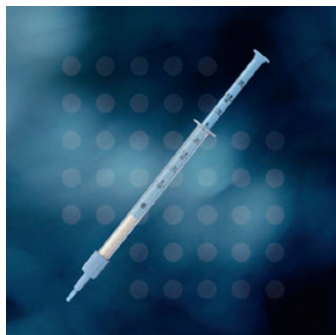
- Unsere Spender (Lebendspende) kommen ausnahmslos aus dem EU-Raum und der Schweiz. Somit unterliegen sie, was die Entnahmen anbelangt, den EU Direktiven 2004/23 und 2006/17.
- Das Spenderwesen ist in der EU und auf Ebene der Mitgliedsstaaten hinsichtlich Organ- und Gewebespenden streng gesetzlich reglementiert.
- Jedes Implantat kann jederzeit bis zum Spender zurückverfolgt werden.
- Das «Kaufen» von Spendergewebe ist innerhalb der EU unmöglich.
- Alle Spender werden den europäischen und schweizerischen entsprechenden Höchst-Anforderungen der Qualitäts-Testung unterzogen.

Informations relatives au produits

- *Nos donneurs (donneur vivant) sont issus sans exception de la Suisse et de l'UE. Ils sont soumis ainsi aux directives UE 2004/23 et 2006/17 relatives aux prélèvements.*
- *Les dons d'organes sont strictement réglementés par la loi dans les pays de UE et les états membres.*
- *Pour tout implant la traçabilité jusqu'au donneur doit être garantie.*
- *Le commerce avec les tissus provenant de dons est impossible en UE.*
- *Les donneurs sont soumis à des tests de qualités suffisants à la plus haute exigence de la Suisse et Européenne.*

Allobone®

Powder & Granulate prefilled and ready to use



AB172-90035	Allobone Spongiosa Powder	0,5	0.5 cc	Syringe
AB174-90036	Allobone Spongiosa Powder	0,5	1 cc	Syringe
AB176-90037	Allobone Spongiosa Powder	0,5	2 cc	Syringe

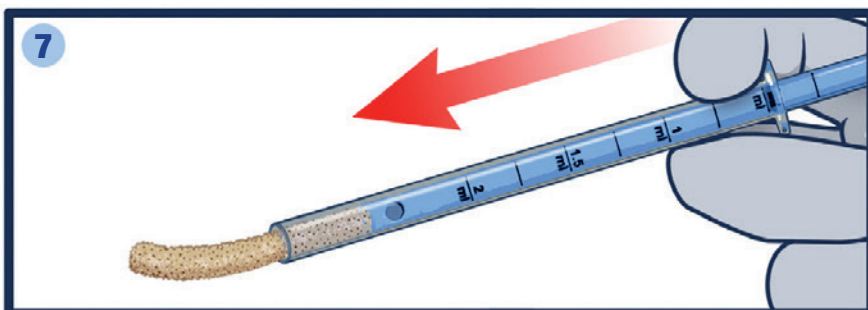
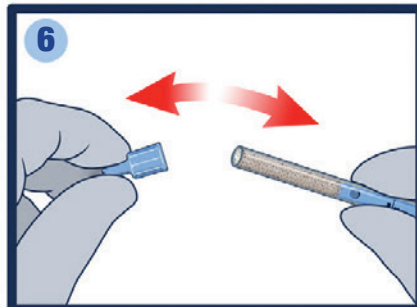
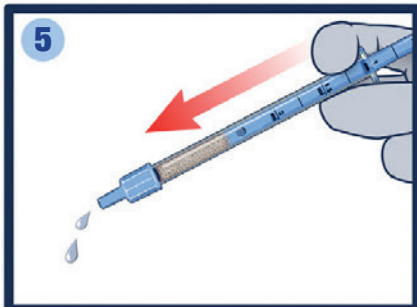
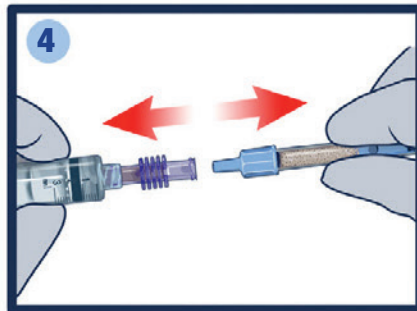
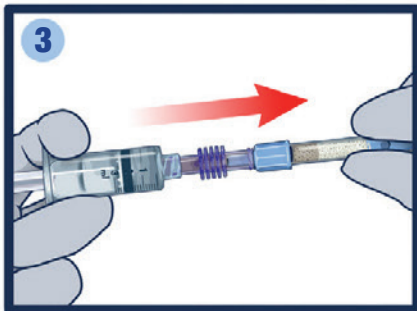
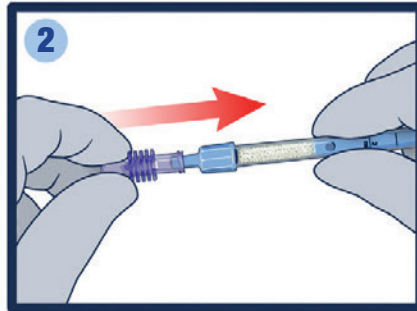
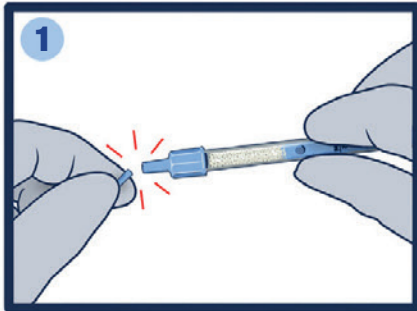
AB173-90055	Allobone Cortico-Spongiosa Powder	0,5	0.5 cc	Syringe
AB175-90056	Allobone Cortico-Spongiosa Powder	0,5	1 cc	Syringe
AB177-90057	Allobone Cortico-Spongiosa Powder	0,5	2 cc	Syringe



AB182-90082	Allobone Spongiosa Granulate	7 cc		Syringe
AB184-90084	Allobone Spongiosa Granulate	18 cc		Syringe
AB186-90085	Allobone Spongiosa Granulate	25 cc		Syringe

INSTRUCTION MANUAL

Allobone bone powder prefilled syringe + Sterile Luer lock connector



- 1 Break the tip of the cap
- 2 Connect the Luer lock connector to the syringe
- 3 Connect a syringe filled with patient's blood or with sterile physiological serum. Aseptically transfer the liquid up to the plunger in order to completely hydrate the bone powder
- 4 Disconnect the syringe from the Luer lock connector
- 5 Discharge excess liquid by pressing the plunger.
Caution: wait 4 min before using
- 6 Remove the cap
- 7 Press down the plunger in order to apply the rehydrated bone powder into the graft site

Luer lock connector made by:



CE 0459

Allobone® ACL Revisions-Set

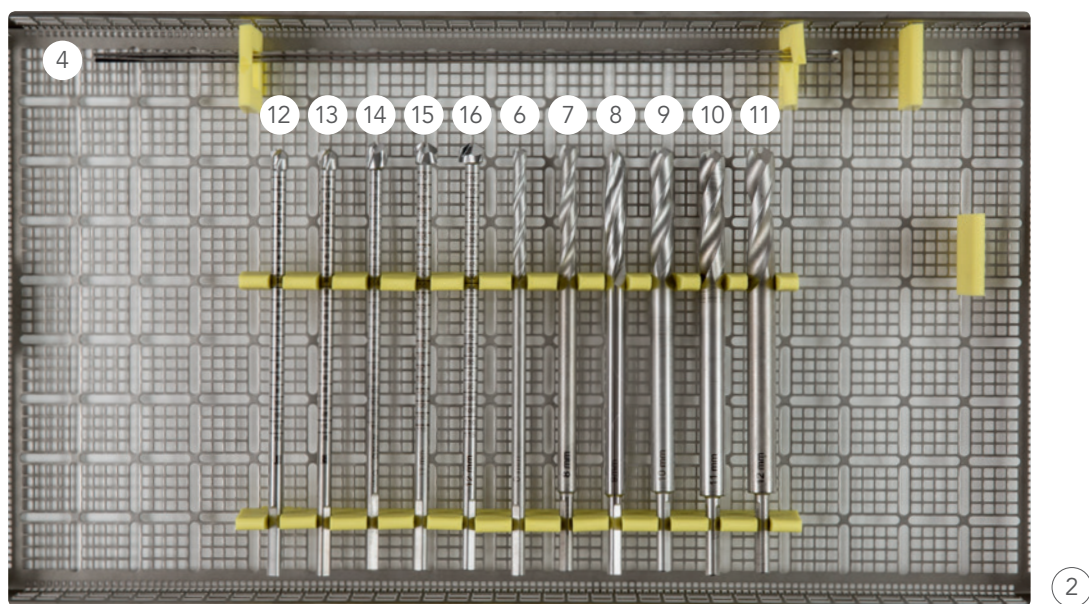
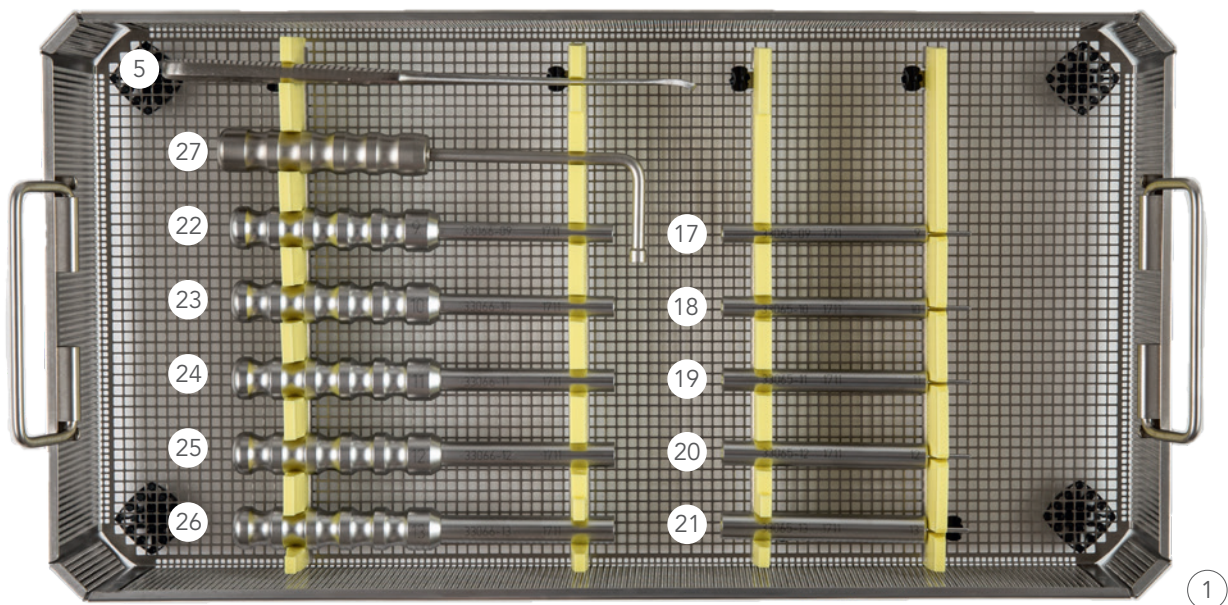
Femur



Tibia



ACL Revisions-Set



ACL Revisions-Set

Implant-Set Dowels

Product	Description	Quantity
AB409-00909	Allobone Dowels 9mm x 28 L	2
AB409-00910	Allobone Dowels 10mm x 28 L	2
AB409-00911	Allobone Dowels 11mm x 28 L	2
AB409-00912	Allobone Dowels 12mm x 28 L	2
AB409-00913	Allobone Dowels 13mm x 28 L	2
AB409-00914	Allobone Dowels 14mm x 28 L	2

Instrument-Set

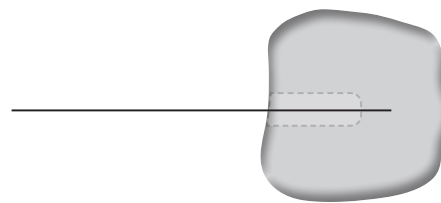
Article	Nr.	Description	Quantity
30001		Allobone® ACL Revision SET	
30214R	1	Screen basket 488x254x77mm	1
30217R	2	Screen basket lid to the 30214R	1
30210R	3	Screen basket tray insert	1
30145	4	K-wire 2.2x 310	2
30401	5	Abrador 7.5mm	1
30173	6	Cannulated Drill Tibial 6mm	1
30079	7	Cannulated Drill Tibial 8mm	1
30080	8	Cannulated Drill Tibial 9mm	1
30081	9	Cannulated Drill Tibial 10mm	1
30082	10	Cannulated Drill Tibial 11mm	1
30083	11	Cannulated Drill Tibial 12mm	1
30085	12	Cannulated Dril Femoral 8mm	1
30086	13	Cannulated Dril Femoral 9mm	1
30087	14	Cannulated Dril Femoral 10mm	1
30088	15	Cannulated Dril Femoral 11mm	1
30089	16	Cannulated Dril Femoral 12mm	1
IDGD09	17	Instrument Tibial Straight 9	1
IDGD10	18	Instrument Tibial Straight 10	1
IDGD11	19	Instrument Tibial Straight 11	1
IDGD12	20	Instrument Tibial Straight 12	1
IDGD13	21	Instrument Tibial Straight 13	1
PGP03D09L190	22	Cannulated Instrument Femoral 9	1
PGP03D10L190	23	Cannulated Instrument Femoral 10	1
PGP03D11L190	24	Cannulated Instrument Femoral 11	1
PGP03D12L190	25	Cannulated Instrument Femoral 12	1
PGP03D13L190	26	Cannulated Instrument Femoral 13	1
33065-02	27	Extraction Instrument Curved	

Surgical Technique

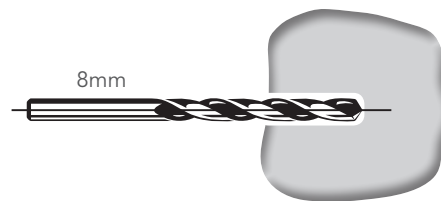
Press-Fit

Schema Technique

Cannulated Drill	Bone Dowels
8mm	9mm
9mm	10mm
10mm	11mm
11mm	12mm
12mm	13mm
13mm	14mm



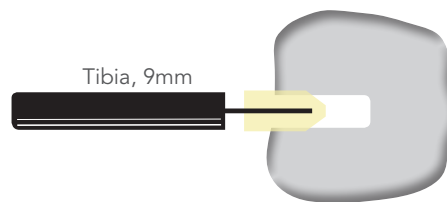
1. Placing the K-wire
2.2 x 310 mm



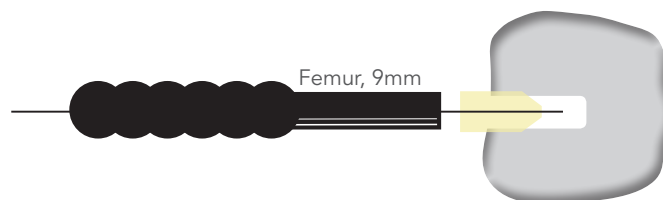
2. Drilling according to defect (8-12 mm drill)



3. Soak the bone dowel
1 min in NACL or plasma



4. Use the Instrument Straight for the Tibia part: place the bone dowel on the Instrument and impact.



5. Use the Instrument cannulated for the femoral part: place the bone dowel through the k-wire and impact.

Video Tibia:

<https://www.youtube.com/embed/jlIMlxpJzk0>

Video Femur:

<https://www.youtube.com/embed/F5XFBfAXTNk>